

Zebra Systems News

Thanks To New Customers!

Thanks to all those new customers who took advantage of our \$10 ~~February~~ Rainbow Special on the CoCo Graphics Designer Plus (CGDP). I sincerely believe that you have made a wise purchase and that the CGDP will prove to be easy, productive, and enjoyable for you to use.

The Zebra CGDP \$10 Special is my last ditch attempt to introduce more CoCo users to the Zebra product line. I know from experience that many first-time Zebra customers become repeat Zebra customers until they own most or all of Zebra's products.

The CGDP was the first of three programs written for the CoCo by former Zebra employee Jef Street. The other two programs which feature even more advanced Graphical User Interfaces are **The Label Designer** which prints labels with graphics and text, and **First Prize** which prints awards, certificates, diplomas, and licenses.

I Prefer Mail Orders!

Whenever possible, please place your orders or send in your technical questions by mail. If you call Zebra, most of the time you'll get a voice mail system answering your call, not a live person. I listen to the CoCo messages and process orders every few days.

*FREE LABEL OFFER!

Get 1000 Color-Coded Fanfold Address Labels, 250 each Yellow, Green, Pink and Blue, size 3 1/2" x 15/16". These labels weigh over 1 lb and require a larger shipping box and additional postage. This \$8.95 value is yours if you just pay the additional shipping costs, of \$1.50 for the USA or \$2.50 for Canada. Offer good only 1 per customer, with the purchase of the Label Designer at the \$19.95 price.

Send to this whole page as an order form to:

Zebra Systems, Inc.
131 Joralemon Street #52
Brooklyn, NY 11201
(718) 625-6220

Special Prices With This Order Form:

___ Label Designer \$19.95 ___
___ *Special Label Offer (to USA)..... \$1.50 ___
___ *Special Label Offer (to Canada).... \$2.50 ___
___ First Prize \$29.95 ___

___ 300 POKES, PEEKS N' EYES \$19.95 ___
___ 500 POKES, PEEKS N' EYES 16.95 ___
___ SUPPLEMENT TO POKES PEEKS 9.95 ___
___ Flight Simulator II for the CoCo 3...
by subLOGIC. Tandy price \$34.95. \$10.00 ___

___ Coco Graphics Designer Plus \$10 ___

___ Picture Disk #1 \$7.45 ___
___ Picture Disk #2 \$7.45 ___
___ Picture Disk #3 \$7.45 ___
___ Picture Disk #4 \$7.45 ___
___ Picture Disk #5 \$7.45 ___
___ Picture Disk #6 \$7.45 ___
___ Font Disk A \$7.45 ___
___ Font Disk B \$7.45 ___
___ Border Disk #1 \$7.45 ___

___ 9 Disk set special..... \$59.95 ___
(Contains 6 picture, 2 Font, 1 Border)
___ 8 Disk set special for Canada. \$55.95 ___
(as above less disk #6 US State Maps)

___ Other _____ \$ _____

Subtotal _____
Shipping & Handling \$3.00 _____
For COD's add additional \$4.00 _____
NY & NJ Residents please add sales tax _____
Total _____

___ Check Enclosed

___ VISA/ MC # _____
Expiration Date ____/____
Signature _____

Name _____

Address _____

City _____ ST _____ ZIP _____

Label Designer

No other program lets you make great labels so easily.

• **Print Labels With Text And Graphics:** Use Label Designer's fonts and pictures or any of Zebra's optional Picture & Font Disks.

• **Zebra Systems' Graphics User Interface:** Pull down menus, scrolling-window file selectors, dialog boxes, radio Buttons, the works!

• **Standard Features:** Click and drag picture placement, up to 4 pictures per label, 3 different picture sizes, powerful text editing with variety of type fonts and sizes, prints 1-999 copies, templates for standard & large address, file folder, disk, and cassette label sizes.

• **Mail Merge Option** merges name and address or other text file data for printout onto your custom label templates with graphics and other text. Great for club mailings, Christmas card lists, name tags, etc.

• **Disk Directory Option** pastes the names of your disk files onto the label text editor screen for inclusion on your labels.

• **Serial Numbering Option** for making sequentially numbered admission tickets, product numbering, inventory labels, etc.

• **Hardware Requirements::** CoCo II 64K, or CoCo 3, disk drive, mouse or joystick, and compatible printer: Epson RX/FX/LX, Gemini 10X, SG10, NX10, NX1000, DMP105/106/110/120/130/132/200/400, Panasonic KXP1080 / 90 /91/92, Prowriter, C.Roh 8510, Okidata 92/93/182/183 & more.

Label Designer

disk & 64 page user's manual ...Only **\$29.95**

• **Label Assortment:** including evaluation quantities of various color file folder, standard address, large address, disk, and cassette labels, plus rolodex cards**\$5.00**
We stock white and colored labels in a variety of address, disk, and cassette sizes at competitive prices.

Directory Option

It is often very useful to place the names of the files that are on a disk, onto the disk's label. You could use your Disk BASIC to list the directory and then type the information into the Label Designer's text editor. But there is a much easier way.

The Label Designer text editor has a special directory feature. If you hold down the BREAK key and the press the Q key at the same time, the program will examine the directory of any disk you place in drive 0 and list the file names on that disk into your Label Designer text editing area. The file names will be placed starting on the line where your text cursor is. Lines above the text cursor will not be affected.

Mail Merge

The Label Designer's merge option allows you to insert lines of text from a designated text file onto label templates that you design. The most common use of this function is for taking names and addresses from a mailing list file and overlaying each address record onto a label you've designed with specific picture and font selections.

The procedure is simple. You prepare a label design, just as you normally would, except that you place a greater-than symbol, the ">" character, at the beginning of each line that you would like replaced with data from your merge file. If you wish, you can type in remarks on the rest of the line to remind you what the function of the line is.

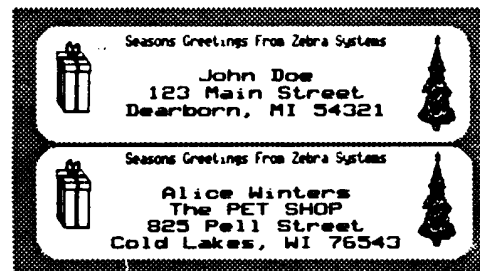
For example consider the label shown below. It has two pictures on it and a Seasons Greeting across the top.

Four lines contain the ">" character followed by comments about the usage of each line.

Seasons Greetings From Zebra Systems

>Name
>Address 1
>Address 2
>City, State, ZIP

When the above label is loaded, PRINT MERGE selected, and then your text editor or data base program address file is specified, the labels shown below are produced.



Serial Numbering

The Label Designer has a very easy to use serial numbering feature. It is useful for printing admission tickets and inventory or product labels.

The serial numbering feature works as follows: When the Label Designer gets ready to print a label, it checks each line of text to see if the line contains a number sign character "#". If a # is present, the program will look at the 4 characters immediately following it. If these 4 characters contain a valid integer from 0 to 9998, the program will increment the number by one before printing it.

Below are a two sample labels that use the serial numbering feature.

Widget Model 101
Serial #3477

LABEL DESIGNER SAMPLE COLLECTION NO. 1
COPYRIGHT (C) 1989
ZEBA SYSTEMS, INC.
ALL RIGHTS RESERVED

VERSION 1.0
SERIAL #1004

1

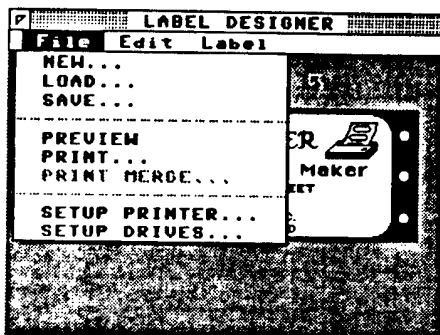
LABEL DESIGNER

LABEL .BMS	LABEL .SCR	LABEL .BIN
DISK .BIN	PRINTING .OVR	SETUP .OVR
SETUP .OVR	CHARING .SYS	CHARING .SYS
CHARING .SYS	LABELS .SYS	RENAME .SYS
PRINTERS .HIS	PRINTERS .HIS	DEFAULT .PRN
LABEL1 .PIC	LABEL2 .PIC	
LRCAMER .LAB	STANDARD .LAB	FILE .LAB

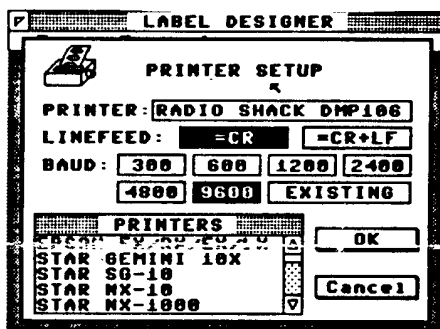
The file names will appear three across as shown in the sample label above. The directory function will show as many files as can fit, on the label lines available after the line your editing cursor is on.

* The labels on this page are shown 64% of actual size.

A Selection Of Label Designer Screens



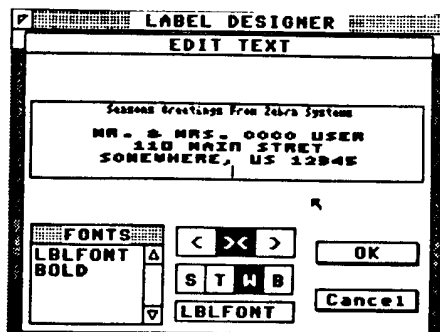
All the Label Designer's functions are selected from the Main Label Designer Screen's File, Edit, and Label pull down menus. Shown above is the Main Screen with the File menu opened.



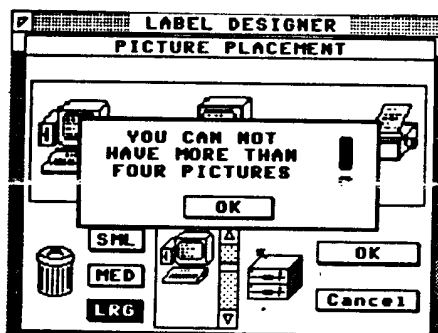
Configuring your Label Designer is done once with this easy printer setup screen. Just click the buttons to set carriage-return and baud rate settings. Find your printer in the scrolling window and just click on it.



Each label style is saved in a file. Zebra's standard file-selector window lists all the styles in a scrolling window and also allows you to access multiple disk drives. Simply click on the style you want from the scrolling window or alternatively type in its name. Similar screens are used to save label designs.



Shown above is the text editor window for a Standard Size address label. The arrow buttons instantly left, center, or right justify text on a line. The STWB buttons select Standard, Tall, Wide, and Big type sizes. Clicking on a name in the FONT window assigns a particular font to a line of text. The program has five built in fonts but also lets you use the optional CoCo Graphics Designer Plus font disks A and B.



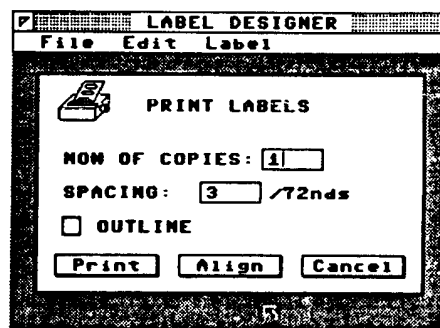
The picture placement window is shown above. To place pictures: 1) Click on the disk drive icon to select the picture collection you want. You can access built-in and optional CGDP picture disk collections. 2) Find the picture within the collection in the scrolling window. 3) Click on the Small, Medium, or Large sizing buttons to specify the size picture you want. 4) Use your mouse or joystick to drag a copy of the picture from the scrolling window to wherever you want it on your label layout area.

You can have up to 4 like or different pictures on a label. The Label Designer is a very graceful responsive program with many built in error messages. For example, if you try for 5 pictures you will get the error message shown above.

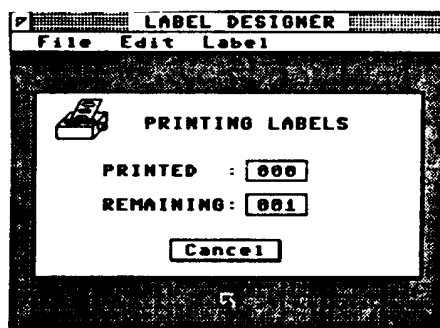
If you want to remove pictures from a label design, just drag them from the label area to the trash can icon.



A special hi-resolution preview function lets you view your labels enlarged in a horizontal scrolling window, as shown above.

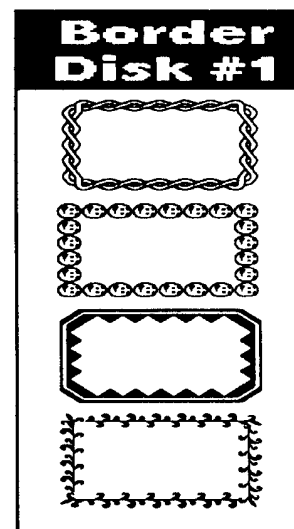
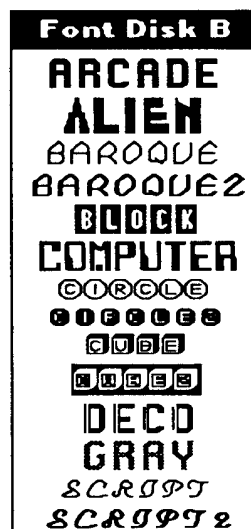
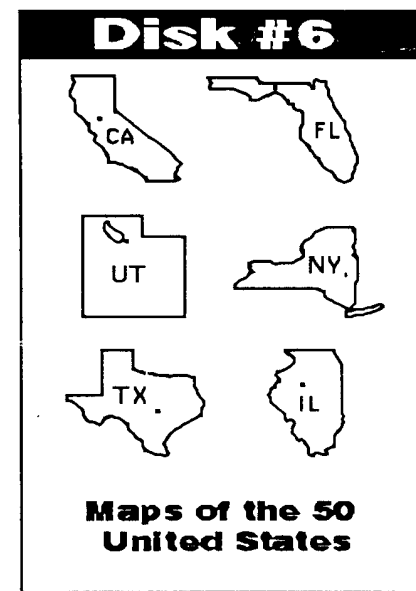
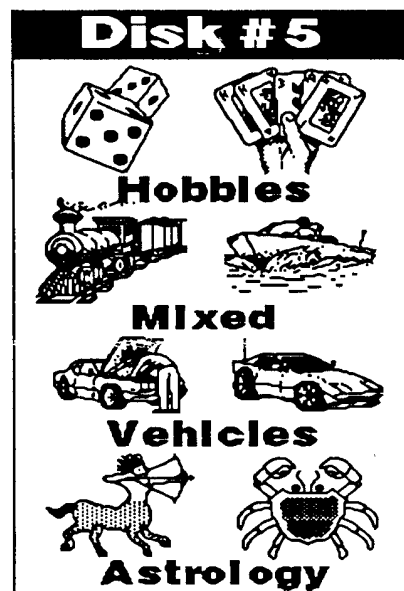
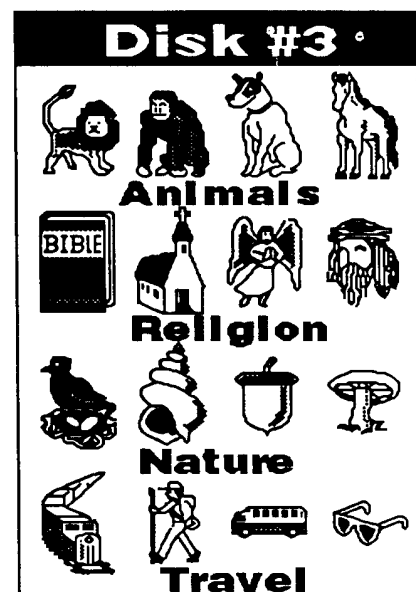
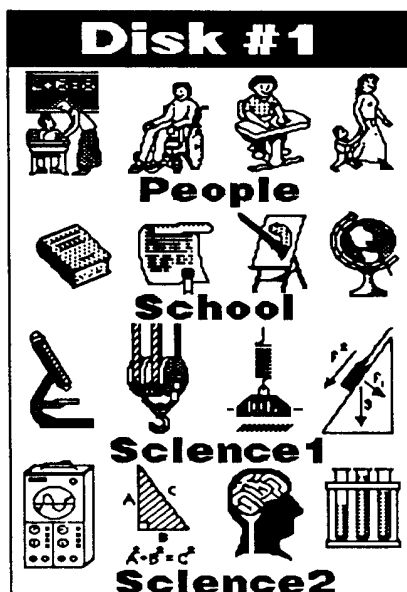


The print control dialog has several features. You can click the Align button to print the outline of two successive labels to align your printer. You can specify from 1 to 999 labels to be printed and you can set the inter-label spacing in 72nds of an inch for non-standard label sizes.



For multiple copy printing the Printing Status Screen keeps tabs of your progress and permits you to abort printing.

Copyright © 1990
Zebra Systems, Inc.
All rights reserved.



This page shows a few samples from the optional add-on disks for the CoCo Graphics Designer Plus (CGDP). The picture disk graphics can be used with the CGDP, the Label Designer (LD), and with Colorware's CoCo Max and Max10. The fonts can be used with the CGDP and LD. The borders are used only with the CGDP.

Flight Simulator II

from subLOGIC

Tandy Cat. No. 26-3242

Regularly \$34.95

Sale Price \$10.00

Zebra has 50 copies of subLOGIC's Flight Simulator II. Radio Shack sells it for \$34.95. Our price is just \$10 with the purchase of First Prize. This offer is good while the supply lasts. *Requirements: Color Computer 3 with 128K Memory and disk drive.*

PROGRAM DESCRIPTION:

Put yourself in the pilot's seat of a Piper 181 Cherokee Archer and head for the skies! High-Speed color 3D graphics provide a spectacular panoramic view as you practice takeoffs, landings, and aerobatics. Complete documentation gets you airborne quickly even if you've never flown before. And when you think you're ready, you can test your flying skills with the "World War 1 Ace" aerial battle game. Flight Simulator II features include • over 80 airports in four scenery areas: New York, Chicago, Seattle, and Los Angeles • day, dusk and night flying modes • user-variable weather, from clear blue skies to grey cloudy conditions • full flight instrumentation • VOR, ILS, ADF, and DME avionics • navigation facilities and course plotting • flight handbook and information manual.

Sample labels printed with the Label Designer on a Tandy DMP105 printer.

Shown 64% of actual size.



COLLEGE BAKE SHOP
200 Henry Street
Queens, NY 11234
(718) 123-4567

ASK FOR PARY SMITH

ROLODEX CARD

DISK LABEL

PROCA	INIS	PROCB	INIS	PROCC	INIS
PROCD	INIS	PROCE	INIS	PROCF	INIS
PROCG	INIS	PROCH	INIS	PROCI	INIS
PROCJ	INIS	PROCK	INIS	PROCL	INIS
PROCM	INIS	PROCN	INIS	PROCO	INIS
PROCP	INIS	PROCA	INIS	PROCB	INIS

DISK LABEL

BEETHOVEN SYMPHONY NO. 5
NEW YORK PHILHARMONIC - ZUBIN MEHTA

SIDE 1



SIDE 1

COLUMBIA RECORDS #124656

CASSETTE LABEL



Season's Greetings From Zebra Systems

MR. & MRS. COCO USER
110 MAIN STREET
SOMEWHERE, US 12345



STANDARD ADDRESS LABEL

ACCOUNTS PAYABLE

FILE FOLDER LABEL



LABEL DESIGNER SAMPLE COLLECTION NO. 1

UNPUBLISHED (C) 1989
ZEBRA SYSTEMS, INC.
ALL RIGHTS RESERVED

VERSION 1.0

SERIAL #1004

1

Books That Can Launch A 1000 Programs

Pokes, Peeks and Execs are your guides into the jungle of computer programming. These commands give you the power of Machine Language without leaving the security of BASIC. Each book is a collection of "inside" information, with explanations and examples to help you immediately put it to use. Everyone from the novice to the professional will find these handy books a wealth of information.

300 POKES, PEEKS, 'N EXECS

- 40/80 column Screen Text Dump
- Save Text/Graphics Screen to Disk
- Command/Functions Disables
- Enhancements for CoCo 3 BASIC
- 128K/512K RAM Test Program
- HPRINT Character Modifier

For CoCo III only.....

Price \$19.95

500 POKES, PEEKS, 'N EXECS

- Autostart your BASIC programs.
- Disable Color BASIC/ECB/Disk BASIC
- Disable Break Key/Clear/Reset Button
- Generate a Repeat-key
- Transfer ROMPAKs to tape
- Set 23 different GRAPHIC modes
- Merge two BASIC programs
- And much much more!!!

For CoCo 1, 2, and 3.....Only \$16.95

SUPPLEMENT TO 500 POKES, PEEKS, 'N EXECS

- 200 additional Pokes, Peeks and Execs (500 Pokes Peeks 'N Execs is a prerequisite)
- ROMPAK transfer to disk
- PAINT with 65000 styles
- Use of 40 track single/double sided drives

- High-speed Cassette Operation
- TeleWriter, CoCo Max enhancements
- Graphics Dump (for DMP printers)
- Text Screen Dump

For CoCo 1, 2, and 3.....Only \$9.95

First PrizeTM

Now you and your CoCo II or 3 can make Awards, Certificates, Licenses, and Diplomas.

Templates categories include:

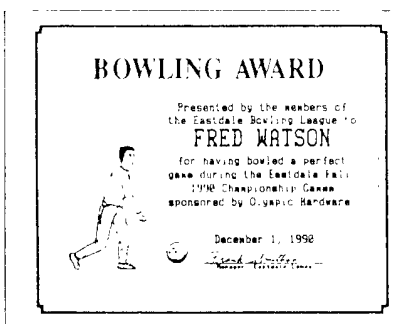
BUSINESS	HOME
EDUCATION	HUMOR
FAMILY	RELIGION
GENERAL	SPORTS



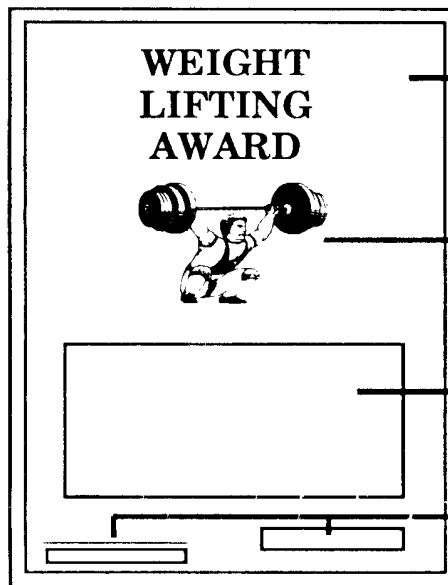
Vertical 8.5" x 11"



Reduced 8.5" x 5.5"



Sideways 11" x 8.5"
actual printouts shown 1/5 size



BORDERS Just click on a border in the scrolling border selection window to choose the border you want.

TITLES Some templates have fixed ultra-high resolution titles up to 110 points high. Other Templates are designed for you to type in your own title.

ART Five diskettes filled with beautiful professional graphics drawn exclusively for First Prize and optimized to look great on dot matrix printers.

MAIN TEXT AREAS Select type font and size and place your text in a pre-designated area on each template

SIGNATURE LINE and **DATE LINE** give your creations that classic look.



First Prize Includes Nine Template Disks, Program Disk, Labeled Disk Storage Box, 32 Page Typeset User's Manual, and 64 Page Template Directory.

First PrizeTM
Complete
10 Disk Set!

First Prize is the culmination of the largest CoCo programming effort in Zebra's history, over 2000 hours of work, and the results are very impressive. First Prize breaks completely with Zebra's old 32 x 56 dot graphics format of the CoCo Graphics Designer Plus and Label Designer and provides high-resolution art limited only by the size of the entire page: 672 x 456 dots.

First Prize makes awards, certificates, licenses, and diplomas on your 64K CoCo II or 3. Its extensive collection of templates with superbly crafted art and titles for business, education, family, home, humor, religion, sports and more, make it a delight to use. After selecting a template, you choose a border, fill in the date and signature lines, and type in whatever you want to say in the main text area. Many titles can also be edited.

First Prize requires a mouse or joystick, 64K CoCo II or 3, disk drive and compatible printer. Printer support is similar to our CoCo Graphics Designer Plus and Label Designer, but please specify your printer(s) when ordering.



Shown are a few selections from the First Prize Family and Business categories. First Prize pictures are limited only by the page size of 672 X 456 dots.

CoCo Graphics Designer Pictures were limited to 32 X 56 Dots.